

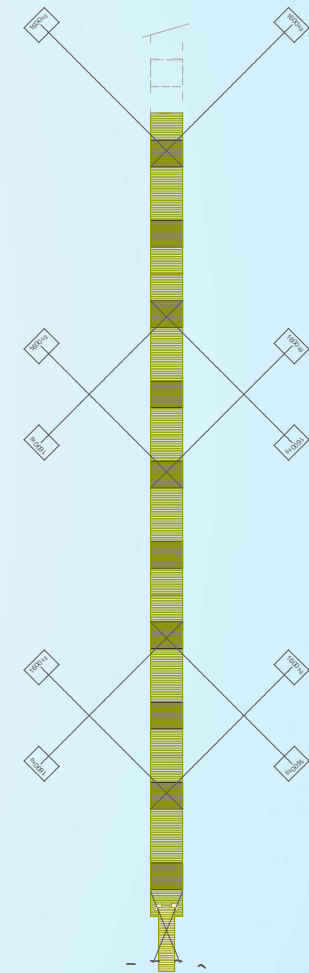
TDS
097000

S12™ - Marina Series Pontoons

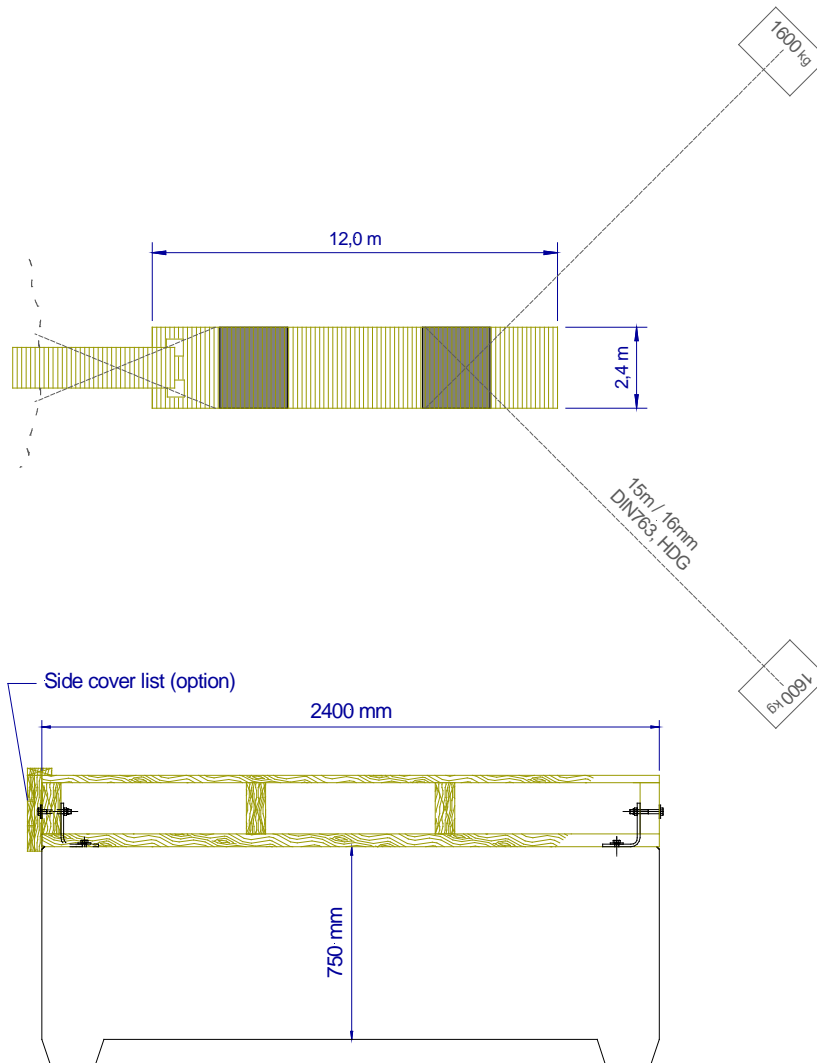


A-Laiturit S12™ Marina Series Pontoons with rigid weatherproofed wooden frame and concrete floats are popular choice for marina builders. They can be easily modified for various purposes. The flexible joint system makes it easy to build the dock as long as needed or extend or modify the marina by future demands.

A-Laiturit S12™ Marina Series Pontoons are excellent for building public service marinas, as well as for high quality private harbours.



S12™ Marina Series Pontoon with an Access Bridge 5 – 4,8 x 1,2 m (product 097400):



Dock properties

Main dimensions: 2,4 x 12,0 m
 Floating height: App. 0,5 m up from water surface, depending on anchoring and installed options
 Fasteners: Nails hot dip galvanized according ASTM A123 and A153, min surface thickness 90 micrometers / G185.
 Other steel parts: Hot dip galvanized according HDG Standard SFS-EN ISO 1461
 Wood: Finnish pine. Impregnated under Kestopuu® quality demands to AB and A class.
 Dock plank 28x95 mm, frame 75x200 mm

Float properties

Main dimensions: 2,4 x 2,0 x 0,75 m
 Concrete: K40, mix for continuous arctic sea use
 Reinforcement: All the reinforcements hot dip galvanized according HDG Standard SFS-EN ISO 1461
 Float: Expanded polystyrene EPS 60 for pontoons

Anchoring

Recommended anchoring depends on installation site conditions. Most commonly is used 15 m/16 mm DIN 763 HDG chains and 1600 kg concrete anchors. The chains are lead under the float close bottom; so the chains do not disturb the boat traffic close the pontoon.

Other anchoring methods are also possible.

Joining

Pontoons may be joined to each other with flexible joint parts.

Options available:

- Installation possible side by side, T and L shape by customer choice
- Dock may also be produced shorter by demand.
- Additional floats for carrying heavy-duty load
- Wooden side cover list
- Handrails
- Light / power pedestals
- Mooring fingers and other mooring accessories ... etc

A-Marinas Finland Oy / A-Laiturit Oy

Voudinkatu 39, FI-21200 Finland

Tel. +358 207 433 100

www.a-laiturit.fi - info@a-laiturit.fi